

### GENERATOR SET SPECIFICATIONS

- \* High quality and reliability.
- \* Structurally easy start-up and maintenance.
- \* Heavy duty water cooled diesel engine.
- \* Brushless industrial alternator with AVR.
- \* Steel base frame integrated with high cap. fuel tank.
- \* Anti - vibration mounts.
- \* High temperature, low oil pressure, fuel level alarms and shutdowns.
- \* Engine filled with lubrication oil and coolant mix.
- \* Engine coolant heater.
- \* Fuel level indicator on LCD display of controller.
- \* Complete protection of rotating and hot parts.
- \* Industrial type silencer.
- \* Fuel tank and engine oil heater ( Option ).

### CONTROL PANEL



- \* Multi - lingual control panel with microprocessor.
- \* Digital LCD - display provides simple, intuitive menu navigation and control of generator set operation.
- \* Key information is displayed via the LCD screen.
- \* Simple push-button control;  
OFF - MANUAL - AUTO - TEST - START
- \* Manual programming on control panel.
- \* Circuit Breaker.
- \* Emergency stop button, light and sound alarm siren.
- \* Battery charger.
- \* Remote control with GSM modem ( option ).

### SOUNDPROOF CANOPY



- \* Sound attenuated.
- \* Robust and highly corrosion resistant construction.
- \* Excellent access for maintenance through 2-6 doors.
- \* Fully weatherproof.
- \* Base mounted lifting eyes and canopy lifting points.
- \* Non-flammable acoustic foam.
- \* Totally enclosed exhaust silencing system.
- \* Vibration absorber pads.

Manufacturer reserves the right to make changes in generator set specifications without prior notice.

[www.ett.com.tr](http://www.ett.com.tr)

### OUTPUT RATINGS

Standby Power (ESP)	kVA / kW	350 / 280
Prime Power (PRP)	kVA / kW	318 / 255
Current (ESP)	A	505
Voltage - Frequency	V - Hz	400 / 230 - 50
Phase Quantity - Power Factor	Unit - Cosφ	3 - 0,8

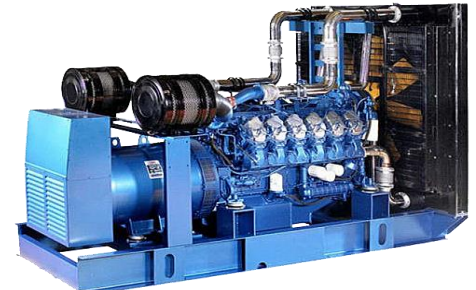
### ENGINE

Engine Make & Model	BAUDOUIIN	6M16G350/5 <sup>^</sup>
Engine Mechanical Prime Power	kW / (HP)	291 / 390
Air Intake System		Turbocharger & AC
Cylinder Volume	L	9,73
Cylinder Quantity / Type		6 / Line
Bore & Stroke	MM x MM	126 x 130
Compression Ratio		17 : 1
Governing Type		Electronic
Engine Speed	RPM	1500
Cooling Method		Water
Cooling System Capacity	L	50
Oil Lubrication System Capacity	L	30
Electrical System	V DC	24
Fuel Consumption		
100 % Prime load	L / H	63,6
75 % Prime load	L / H	47,7
50 % Prime load	L / H	31,8
Fuel tank Capacity	L	740

### ALTERNATOR

Alternator Make & Model	C.STAMFORD	
Alternator Type	Electronic (AVR)	Brushless
Standby Power (ESP)	kVA	350
Voltage - Frequency	V - Hz	400 / 230 - 50
Voltage Regulation		+/- 1.0
Insulation / Protection Class		H / IP 21
Pole Quantity		4

### DIMENSIONS AND WEIGHTS



Open Type	LxWxH - M / Weight - KG	3x1,3x1,8 / 2700
Canopied Type	LxWxH - M / Weight - KG	3,75x1,6x2,3 / 3400

**Standby Power (ESP):** Emergency power under varying electrical load. Overload is not permitted.

**Prime Power (PRP):** Nominal power under varying electrical load for unlimited hours. 10 % overload is available for a period of 1 hour within 12 hours.

**Electrotech Dis Ticaret ve Tekstil Limited Sirketi Istanbul Trakya Serbest Bolge Subesi, Ataturk Bulvarı, Erguvan Sokak No: 8/1, Catalca / Istanbul / TURKEY**

Tel:+90 212 4383825-4383856, Gsm:+90 532 5446730, [cagrio@electrotech-trade.com](mailto:cagrio@electrotech-trade.com)