

GENERATOR SET SPECIFICATIONS

- * High quality and reliability.
- * Structurally easy start-up and maintenance.
- * Heavy duty water cooled diesel engine.
- * Brushless industrial alternator with AVR.
- * Steel base frame integrated with high cap. fuel tank.
- * Anti - vibration mounts.
- * High temperature, low oil pressure, fuel level alarms and shutdowns.
- * Engine filled with lubrication oil and coolant mix.
- * Engine coolant heater.
- * Fuel level indicator on LCD display of controller.
- * Complete protection of rotating and hot parts.
- * Industrial type silencer.
- * Fuel tank and engine oil heater (Option).

CONTROL PANEL



- * Multi - lingual control panel with microprocessor.
- * Digital LCD - display provides simple, intuitive menu navigation and control of generator set operation.
- * Key information is displayed via the LCD screen.
- * Simple push-button control;
OFF - MANUAL - AUTO - TEST - START
- * Manual programming on control panel.
- * Circuit Breaker.
- * Emergency stop button, light and sound alarm siren.
- * Battery charger.
- * Remote control with GSM modem (option).

SOUNDPROOF CANOPY



- * Sound attenuated.
- * Robust and highly corrosion resistant construction.
- * Excellent access for maintenance through 2-6 doors.
- * Fully weatherproof.
- * Base mounted lifting eyes and canopy lifting points.
- * Non-flammable acoustic foam.
- * Totally enclosed exhaust silencing system.
- * Vibration absorber pads.

Manufacturer reserves the right to make changes in generator set specifications without prior notice.

www.ett.com.tr

OUTPUT RATINGS

Standby Power (ESP)	kVA / kW	500 / 400
Prime Power (PRP)	kVA / kW	455 / 864
Current (ESP)	A	722
Voltage - Frequency	V - Hz	400 / 230 - 50
Phase Quantity - Power Factor	Unit - Cosφ	3 - 0,8

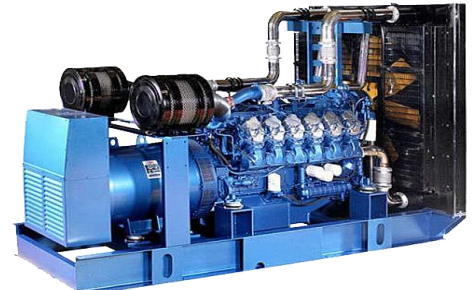
ENGINE

Engine Make & Model	BAUDOUIIN	6M21G500/5 [^]
Engine Mechanical Prime Power	kW / (HP)	409 / 548
Air Intake System		Turbocharger & AC
Cylinder Volume	L	12,54
Cylinder Quantity / Type		6 / Line
Bore & Stroke	MM x MM	127 x 165
Compression Ratio		16 : 1
Governing Type		Electronic
Engine Speed	RPM	1500
Cooling Method		Water
Cooling System Capacity	L	55
Oil Lubrication System Capacity	L	32
Electrical System	V DC	24
Fuel Consumption		
100 % Prime load	L / H	100,0
75 % Prime load	L / H	75,0
50 % Prime load	L / H	50,0
Fuel tank Capacity	L	740

ALTERNATOR

Alternator Make & Model	C.STAMFORD	
Alternator Type	Electronic (AVR)	Brushless
Standby Power (ESP)	kVA	500
Voltage - Frequency	V - Hz	400 / 230 - 50
Voltage Regulation		+/- 1.0
Insulation / Protection Class		H / IP 21
Pole Quantity		4

DIMENSIONS AND WEIGHTS



Open Type	LxWxH - M / Weight - KG	3,25x1,3x1,8 / 3300
Canopied Type	LxWxH - M / Weight - KG	4,25x1,6x2,45 / 4050

Standby Power (ESP): Emergency power under varying electrical load. Overload is not permitted.

Prime Power (PRP): Nominal power under varying electrical load for unlimited hours. 10 % overload is available for a period of 1 hour within 12 hours.

Electrotech Dis Ticaret ve Tekstil Limited Sirketi Istanbul Trakya Serbest Bolge Subesi, Ataturk Bulvarı, Erguvan Sokak No: 8/1, Catalca / Istanbul / TURKEY

Tel:+90 212 4383825-4383856, Gsm:+90 532 5446730, cagrio@electrotech-trade.com